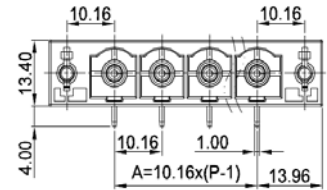
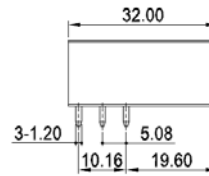
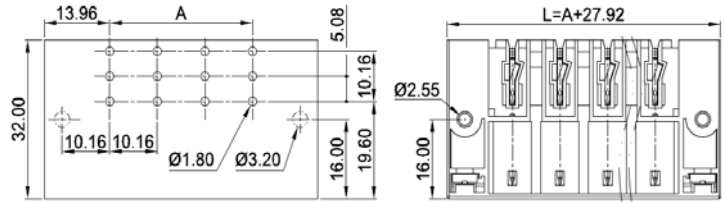
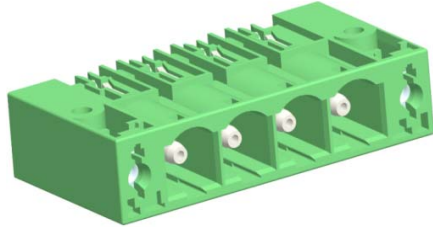


PCB Connector — TLP series ( Pin header )— TLPHW-800RL

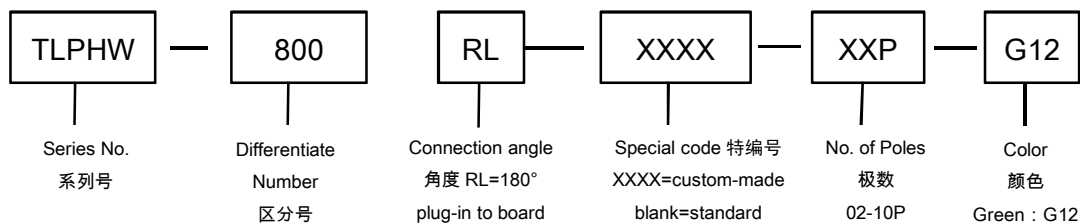


<b>图示(Pic. shown) : TLPHW-800RL-04P-G12</b>	
General.	PCB Connector Rated : 1000V,76A
	Single row , 10.16mm pitch , 02-10 Pole
	Orientation:180°(plug-in to board)

认证 ( Approval ) :

技术参数 Technical Data	UL standard			IEC standard		
	UL应用组别(UL Application group)	UL Application group			IEC过电压别/污染等级(IEC overvoltage category /pollution degree)	
IEC过电压别/污染等级(IEC overvoltage category /pollution degree)	B	C	D	III / 3	III / 2	II / 2
额定电压(Rated voltage)	300V	300V	600V	1000V	1000V	1000V
额定电流(Rated current)	55A	55A	5A	76A	76A	76A
额定连接容量(Rated connection capacity)	--			--		
绝缘材料(Insulation Material)	PA66 UL94 V-0					
电流承载部件材料和镀层( Material & Plating of Current carrier )	Copper alloy , Tin plated					
接线弹片材料(Material of Clamp spring )	--					
绝缘电阻(Insulation Resistance)	500MΩ or more at DC500V					
耐电压(1分钟)(Withstanding Voltage/1Min)	2200V					
额定冲击电压(Rated surge voltage)	8000V					
接线螺丝(Wire clamp unit Screw) , 最大扭矩( torque Max. )	--					
固定螺丝(Mounting Screw) , 扭矩(torque)	M3 , 0.5N·m					
剥线长度(Wire stripping length)	--					
使用温度(Operating temperature)	-40°C up to +115°C					
焊接方式(Soldering recommend)	Wave soldering ,260°C 5S Max (Single Wave) , 260°C 10S Max(Double Wave)					

**订购方式(How to order)**

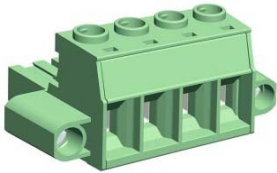


■ 编码片 Coding key



P/N:  
TLPCK-004-S

■ 插头 ( Female Connector ) — single row



P/N : TLPSW-800V  
Wiring orientation :  
180°(wire to plug-in )  
Rated : 1000V,76A , 16mm<sup>2</sup>  
Screw clamp unit: M4 , 1.8N·m